



# HISTORICALLY SPEAKING

THE NEWSLETTER OF THE MILTON HISTORICAL SOCIETY

2005-2006

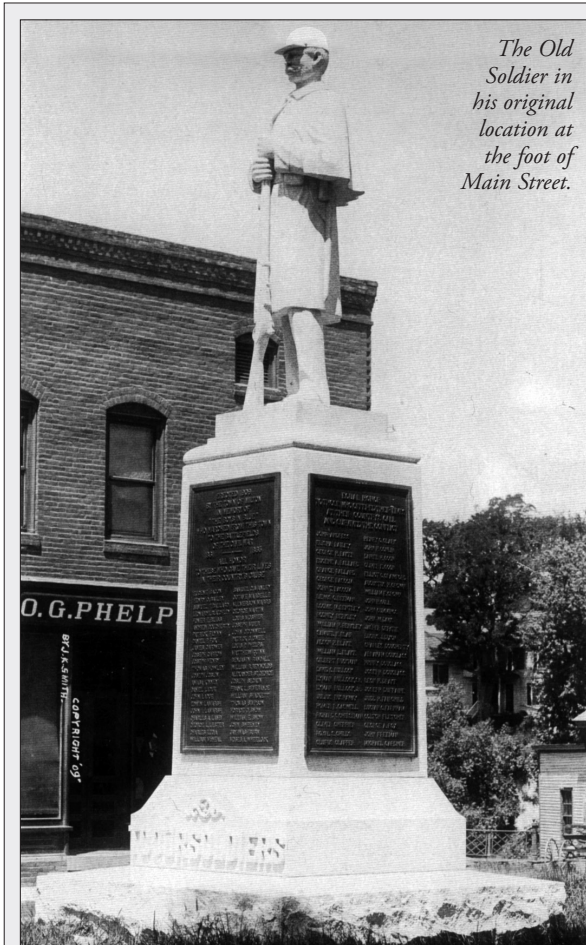
## Our Town's "Old Soldier" by Lorinda A. Henry

Within three days of the Confederate attack on Fort Sumpter, President Lincoln issued his first call for volunteer troops. Vermonters were especially forthcoming, and Milton was no exception. By the end of the war, over two hundred Milton men had answered this call; about a quarter of those answered the highest call and died on battlefields, in prisons, and in campgrounds far away from these green hills.

Teams of brothers, cousins, an occasional father-and-son pair signed up; men in their 40s and 50s to youths not out of their teens joined the cause of the Union. Milton men fought in many of the great campaigns—Gettysburg, Petersburg, and Antietam are only a few of the places that infantrymen and cavalry soldiers from Milton fought and fell.

In most, if not all, of the cemeteries in Milton you can find the graves of former Civil War soldiers. Families often went to the extra expense of markers carved with a few details of their soldier's service to the Union. A few memorial markers were erected to men who never made it home. One especially touching of these is in Miltonboro Cemetery; dedicated to the memory of George Martin, it states, "Killed at Savage Station. Buried where he fell by rebel hands."

By the early 1900s the town decided to raise a monument to honor the soldiers; not to replace, but to supplement, the individual memorial stones. Putting a memorial in a central place of honor would assure that the town as a whole would not forget the men who had given up so much. Other Vermont towns were involved in similar projects but Milton was the first Chittenden County town to do so. A com-



*The Old Soldier in his original location at the foot of Main Street.*

mittee consisting of Col. H.O. Clark, J. Monroe Perry, and Frank E. Cormia worked out the details.

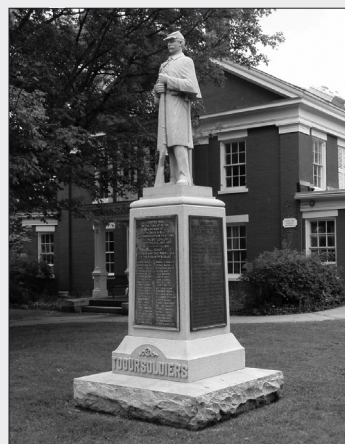
The statue was carved with Mr. Perry as a model representing all of Milton's soldiers. A massive base supports the carving, holding four cast bronze plates listing soldiers who died on the front plate. Other Milton men who served are listed on the three sides. Almost without exception northern Civil War statues face south, gazing in the direction from which the enemy came. Milton's was no exception.

The dedication of the monument on September 6, 1909, brought people from near and far to celebrate. After a parade down Main Street and public addresses by state officials and old soldiers, over 2000 people gathered as Gladys Perry and Elsie Clark, granddaughters of veterans, unveiled the soldier to the public. People came by train and carriage; even a horseless carriage or two made the trip.

Ninety years later those horseless carriages had made the site of the monument a dangerous place. In 1995 new bridge construction and a reworking of the intersection at Main and River

Streets led to the Old Soldier making his first move, to the lawn of the Clark Memorial Building, which at the time housed the town offices. That building later became private property. After nine years of an uncertain existence, the Soldier made the trek last summer to the Milton Historical Museum on School Street, where he now stands, as ever facing southward.

On September 6, 2004, 95 years to the day after his original public debut, the Old Soldier was re-dedicated to the town of Milton and to the brave and never-to-be-forgotten soldiers that he represents.



*In front of the Clark Memorial Building, Milton's municipal offices until 1995. It now houses Cody's Irish Tavern.*



*Concrete workers from S.D. Ireland prepare the base for the Old Soldier's move to the Museum grounds in August 2004.*

# MILTON HISTORICAL SOCIETY

ESTABLISHED 1978

## Officers

Jane FitzGerald *Museum Director*  
 Bill Kaigle *President*  
 Rick Stowell *Vice President*  
 Beverly Quebec *Secretary*  
 Linda Ballard *Treasurer*  
 Mary Skapski *Historian*

## Directors

Gordon Thom *3 years*  
 Bob Sibley *2 years*  
 Perry Thom *1 year*

## Membership

Membership is open to the public. Annual dues are:

Individual \$5.00  
 Family \$7.50  
 Honorary (age 80 & over) Free

Please send payment to:

Milton Historical Society  
 P.O. Box 2  
 Milton, VT 05468

HISTORICALLY SPEAKING

VOLUME 5, NUMBER 1

2005-2006

Bill Kaigle *Editor/Design*

## Fourth Grade History Contest!



Over 150 people attended the 24<sup>th</sup> Annual Junior Historians Award Night at the Herrick Avenue Elementary School on May 12, 2005. Two Society members presented a short program on the preparation, uses and importance of lumber from Milton's massive original white pine forests. Stan Henry discussed everything from log cabins, corduroy roads, and covered bridges to dishes, buckets and barrels. Lorinda Henry displayed some early artifacts. Books and certificates were awarded to 44 students by Linda Ballard.

# The Town Poor Farm by Loren Sanderson

In the mid-1800s, Milton's Poor Farm operated at the end of what is now called Poor Farm Road. For many of the residents who went there, it literally meant the end of the road for them. This town farm came into existence in the mid-nineteenth century, and was the home for people who had no other place to live. Those who were able-bodied were expected to help with the farm chores and house work. In return they received their board, lodging, hand-washed laundry, clothes and sometimes tobacco.

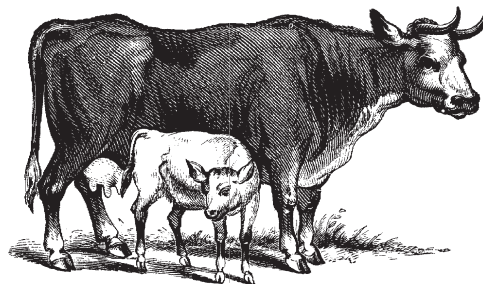
In 1872 C.Z. Beeman was paid \$400.00 for services at the farm. He and his wife are believed to have lived at the Beeman Farm next door. The following year, C.G. Beeman was paid \$375.00 for being superintendent

of the poor farm.

In 1873, a mowing machine valued at \$10.00 and a single sleigh valued at \$15.00 were added to the farm. That same year, produce sales from the farm totaled \$396.99. Items sold included potatoes, oats, corn, rye, eggs, tubs of butter, pigs, a calf skin and hides.

It was probably after 1920 when the Poor Farm was discontinued and the farm was sold. Willie Bittner from Allentown, Pennsylvania bought the farm and moved

his family there around 1925. It was later sold to John Tipper, who operated the farm until the last half of the twentieth century. The interstate highway now covers the southern side of the property and much of the rest of the Poor Farm has been developed into homes.



*Each year, all the farm's possessions were inventoried and published in the Annual Town Report.*

*In 1872, the following items were reported:*

11 cows . . . . . \$500.00	2 scythes & snathes . . \$1.25	1 rolling pin & board . \$5.00
2 horses . . . . . \$150.00	1 spade . . . . . \$1.25	1 pounding bbl. . . . \$1.00
1 double harness . . \$40.00	1 shovel . . . . . \$1.00	1 clothes wringer . . \$6.00
1 double wagon . . . \$50.00	4 empty pork	2 wash tubs . . . . . \$2.00
4 shoates . . . . . \$16.00	& beef bbls . . . . . \$4.00	8 wood pails . . . . . \$2.00
20 hens . . . . . \$6.00	1 pickle bbl . . . . . \$1.00	1 churn . . . . . \$3.00
10 tons hay . . . . . \$160.00		1 brass kettle . . . . . \$5.00
2 tons straw . . . . . \$16.00	6 grain bags . . . . . \$1.50	2 iron pots . . . . . \$1.00
3 bbls pork, including	1 1/2 soap bbls . . . \$1.50	1 iron pan . . . . . \$5.00
shoulders & hams . . \$45.00	1 dozen dining plates \$1.50	1 tea kettle . . . . . \$5.00
1 bbl beef . . . . . \$10.00	1 dozen plates . . . \$1.25	1 tin tea pot . . . . . \$2.25
30 lbs. tallow . . . . \$3.00	1 dozen sauce plates . \$75	1 dish pan . . . . . \$75
one half barrel pickles \$1.50	1 1/2 sett teas . . . . \$5.50	1 cook stove . . . . . \$16.00
5 bushels carrots . . \$2.00	3 small plates . . . . \$25	3 box stoves . . . . . \$15.00
1 plow . . . . . \$8.00	1 milk pitcher . . . . \$37	shovel & tongs . . . . \$75
1 cultivator . . . . . \$2.00	1 water pitcher . . . . \$50	1 whitewash brush . . \$25
5 hoes . . . . . \$2.25	10 bowls . . . . . \$1.50	1 table . . . . . \$3.00
3 rakes . . . . . \$50	2 lamps . . . . . \$1.50	1 stand . . . . . \$1.00
3 hay forks . . . . . \$1.50	2 candlesticks . . . . \$34	1 dozen chairs . . . . \$4.00
2 manure forks . . . . \$3.00	1 sett balance . . . . \$1.00	2 wash boards . . . . \$50
1 corn cutter . . . . . \$25	1 mirror . . . . . \$2.00	6 bed mattresses . . \$10.00
1 nail hammer . . . . \$75	4 chambers . . . . . \$2.00	5 bed ticks . . . . . \$7.50
3 axes . . . . . \$2.00	1 stone jar . . . . . \$75	11 towels . . . . . \$2.20
		3 jugs . . . . . \$50
		1 oil can . . . . . \$50
		1 dozen tea spoons . . \$50
		1 cream pail . . . . . \$75
		1 tea canister . . . . . \$50
		1 lamp filler . . . . . \$50
		1 grater . . . . . \$10
		2 milk dippers . . . . \$20
		6 baking tins . . . . . \$50
		5 pie plates . . . . . \$50
		1 milk strainer . . . . \$75
		1 skimmer . . . . . \$10
		1 tin dipper . . . . . \$20
		1 tin spittoon . . . . . \$30
		5 dozen milk pans . \$17.50
		1 dozen knives & forks \$2.00
		1 dozen table spoons . \$75
		2 sad irons . . . . . \$75
		70 feet clothes line . \$25
		4 dozen clothes pins . \$25

## Campbell & Cary Will Be Missed by Bill Kaigle

In early 2005, Milton lost two of its great historically-minded residents. In January, lifetime Miltonian and Society Charter Member Ardelle Campbell passed away. She was a local school teacher and committee member for the annual history contest. She and her husband John helped to form the Milton Historical Society and were very active members for many years. Ardelle has passed on a wonderful asset to her home-

town in several hours of recorded oral history, describing her life and early Milton.

Franklin Cary passed away in March. He was instrumental in building many amazing parade floats for the Society, including replica barns and houses! He would also ride in costume on these award-winning creations.

Both Ardelle and Franklin will be greatly missed by all who knew them.

# History in the Making!

by Jane FitzGerald

As the Milton Historical Museum, supervised by the Milton Historical Society, is approaching its fifth year in the renovated former Trinity Episcopal Church, we continue to work on our mission to help people of all ages learn about Milton's past and the major changes that have happened over the past 225 years. Some exhibits of special interest are a pictorial town timeline (1763 - 2000), a map of early Milton farms (1940 - 1950) and the photograph collection of local photographer J.K. Smith (1870 - 1918).

In early May 2004, over 150 people including fifty 4th grade winners attended the 22nd Annual Junior Historian

Awards Night at the Herrick Avenue School. Last year's theme was the history, beauty, recreation and pollution of Lake Champlain. Lake Champlain Maritime Museum educator Eric Tichonuk presented a program entitled "Early History of the Canal Boats on Lake Champlain". The Society was recognized later in the month for their Society Operations at the Local Societies Annual Meeting held at Goddard College.

In June we participated in the Fifth Annual Vermont History Expo in Tunbridge. Our theme was Historic Main Street, which was also the focus of our Fourth of July float and 2005 Historic Calendar.

Several Milton High School students along with Social Studies teacher Gary Furlong have had several work sessions at the

Museum and walking tours of Main Street this past year as they gather information for the Vermont Community History Project. This online project focuses on community and will celebrate the past and help plan for the future of Milton.

At their Annual Meeting in July, the Chittenden County Historical Society recognized the Town of Milton and Milton

new location. The day's activities included a walking tour of the original Dedication's parade route from exactly the same date in 1909, a cemetery tour of veterans' graves, and an Open House at the Museum. Highlights of the afternoon program were music including Civil War songs performed by the Milton Community Band as well as Howard Coffin, a noted Civil War historian and author. Mr.

Coffin delivered an inspiring message on the Battle of Gettysburg and the patriotism and participation of Milton's soldiers.

Programs at our monthly meetings focused on a variety of topics: History of the Skeels' Hotel by Nelya Patry, a



Members of the "Blue and Gray" share a moment of peace together at the Civil War Soldiers' Monument Rededication on September 6, 2004.



Deborah Clifford speaks on "Abby Hemenway and the Vermont Historical Gazetteer" on April 6, 2005.

Historical Society as recipients of their "Preservation Seven" Awards. The Town and Society were chosen because of the dedication of their citizens to preserve their historic village, for the purchase and restoration of the Episcopal Church on School Street to house the Museum, and for their decision to move the historic Civil War Soldiers' Monument to the Museum grounds. We are pleased to learn that the small 1937 Fire House will remain in its original location on Main Street. We are also studying possible directional signage to improve visibility and accessibility to the Museum, as well as exploring Historic District designation of the early Milton Village, to include Main Street and the surrounding area.

On September 6, 2004, the Rededication of the Soldiers' Monument was held at its

Daisy Turner presentation by Jane Beck, "History on a Hatbox" by Ken Wheeling, "Epitaphs" by Stan Henry, "The Allen Brothers Vermont's Original Real Estate Developers" by Vince Feeney, and Deborah Clifford's "Abby Hemenway". Many thanks to the Vermont Humanities Council and the presenters who help make our programs possible.

We would like to thank the Town for their support in preserving our heritage, which develops a sense of pride and an appreciation for our community. Reaching out to new residents and our young people is vital to keeping the community's history alive.

*See the enclosed events calendar for this season's great programs!*

## Remember!

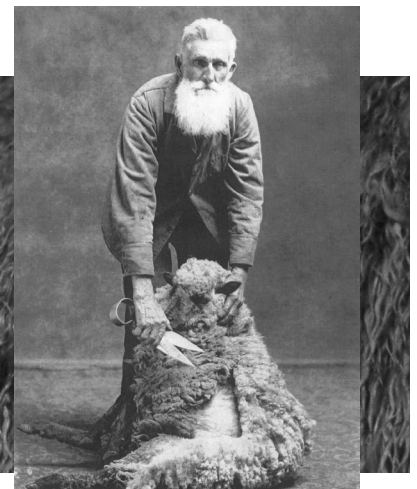
Our membership year begins in April. Please renew or begin your membership today!

Send enclosed form and payment to:  
Milton Historical Society  
P.O. Box 2  
Milton, VT 05468

## TRIVIA TIME

Pictured at right is Alfred Washburn, master sheep shearer. Can you guess how many sheep he sheared in one hour at the age of 88 to set a state record?

Come to the Museum for the answer!





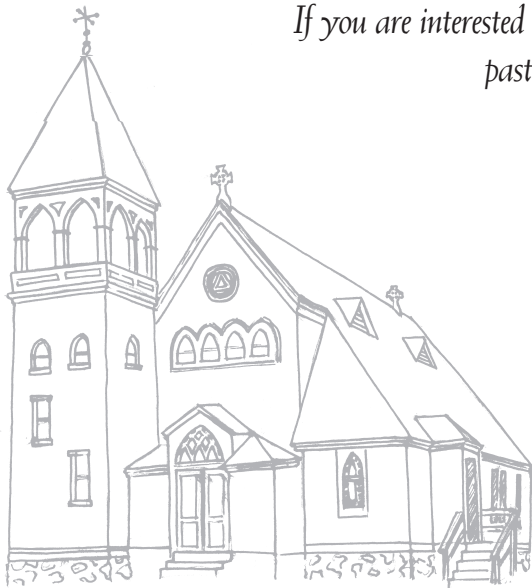
**The Milton Historical Museum now has an official phone number and email address!**  
**Call us at 802-893-1604, or email: miltonhistorical@aol.com!**

.....We are currently working on reusing some beautiful iron fence from the West Milton Cemetery along the north side of the

Museum grounds. Our hope is to have it installed by this summer.....This past year, Century Award signs were presented to the Guitar and Bizcko families on Main Street, and Loren Sanderson on Sanderson Road. If you are in need of one, please call 893-1604.....If you need assistance on a genealogy project, contact Bob Sibley at 527-0906.....If you have a historical program you'd like to see happen, call Bill Kaigle at 893-7387.....If you have photographs or other items you would like to contribute to the Milton Historical Society, please contact Jane FitzGerald at 893-2340.....Monetary donations to benefit the Milton Historical Museum may be sent to: Milton Historical Society, P.O. Box 2, Milton, VT 05468.....A possible public use of the Manley Homestead property owned by Husky is currently being discussed between town and Husky officials. Much appreciation goes to both parties for entertaining the various options.....Back issues of *Historically Speaking* are available by calling 893-1604 or emailing miltonhistorical@aol.com..... A portion of newsletter printing cost donated by Paw Print & Mail, So. Burlington, VT.



*If you are interested in learning about Milton's past and its many events and personalities of the past 150 years, plan to visit the Milton Historical Museum at 13 School Street.*



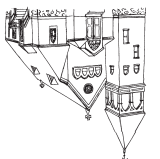
## MUSEUM HOURS

April through October | 1st & 3rd weekend, 1:00 – 4:00 pm  
 Year-Round | By Appointment (call 893-2340)

*We would also like to invite you to join the Society. Annual Membership begins in April each year, and you may join at any time. Please return the membership form attached to the enclosed Events Calendar, noting your specific interests.*

PRSRRT STD  
 U.S. Postage  
 PAID  
 Permit No. 478  
 Burlington, VT

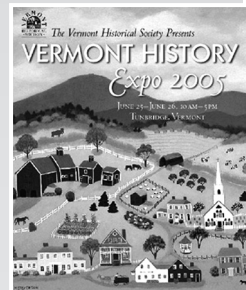
MILTON HISTORICAL SOCIETY  
 P.O. BOX 2  
 MILTON, VERMONT 05468



# 2005-06 CALENDAR of EVENTS

The monthly meeting of the Milton Historical Society is held on the first Wednesday of each month at the Museum at 7:30 p.m. unless otherwise noted. We have an entertaining program, a business meeting, and refreshments. All are welcome to attend. Special and related events are also listed.

- Wed. May 4, 2005      **Junior Historians Awards Night** Topic: "Building a Community: Early Settlers Working Together". Milton Elementary School, Herrick Avenue, 7:30 pm.
- Wed. June 1, 2005      **"Vermont's Largest & Oldest Trees"** by Loona Brogan of the Vermont Tree Society
- Sat./Sun. June 25&26, 2005      **Vermont History Expo 2005** Tunbridge World's Fairground  
10:00 am - 5:00 pm  
Great Exhibits, Presentations, Music & Entertainment.  
Milton Historical Society exhibit: "Milton's Medical History".  
*A Vermont Chamber of Commerce Top Ten Summer Event*
- Sat. July 2, 2005      July 4th Parade – Come see our special Museum exhibit!
- Wed. July 6, 2005      Preparation for Lakefront Campsite Tour & Barbecue
- Sat. July 9, 2005      **Lakefront Camp Site Tour & Barbecue** Tour the sites of several early public camps along Lake Champlain, followed by a barbecue at Camp Everest. Meet at the Museum.  
4:00 pm
- Wed. August 3, 2005      **"Early Medicines & Herbal Cures"** by Stan & Lorinda Henry
- Wed. September 7, 2005      **Dowsing** by Edith Greene, founder of Franklin County Dowsers. Learn how dowsing rods work, as well as how "house dowsing" can improve your health by removing negative spirits and increasing your energy.
- Wed. October 5, 2005      **"Vermont Veterans from the Revolution to Vietnam"** by Carl Johnson
- Sat. October 15, 2005      **Harvest Gathering** time & location to be announced
- Wed. November 2, 2005      **"Historic Main Street"** Community History Project Presentation by Milton High School students & History teacher Gary Furlong. Video presentation & discussion.
- Wed. December 7, 2005      Business Meeting & Preparation for Holiday Cheer Festivities.
- Sun. December 11, 2005      **Holiday Cheer Celebration & Festivities** time to be announced
- Wed. January 4, 2006      **"Vermont's Declaration of Independence"** John & Linda Whitney of Essex Junction discuss the process by which they achieved their goal of designating January as Vermont History & Independence Month, in recognition of the momentous events which resulted in the establishment of the State of Vermont.
- Wed. February 1, 2006      **"Horatio's Drive: America's First Cross Country Road Trip"** The fascinating story of 31-year-old Burlington doctor Horatio Jackson and his automobile journey in 1903 with his mechanic and bulldog. *A Vermont Public Television video presentation*
- Wed. March 2, 2006      **Life Onboard: Studying Lake Champlain's Sunken Canal Boats** by Underwater Archaeologist Adam Kane of the Lake Champlain Maritime Museum.  
*A Vermont Humanities Council presentation*
- Wed. April 5, 2006      **Annual Meeting** Membership Month



For further information please call 893-2340 or 893-7387, or email: [miltonhistorical@aol.com](mailto:miltonhistorical@aol.com)

## MEMBERSHIP FORM

Date \_\_\_\_\_

Renewal

New Member

Name \_\_\_\_\_

Address \_\_\_\_\_

Phone \_\_\_\_\_ Email \_\_\_\_\_

I am interested in (check all that apply):

- Attending monthly historical programs  
 Guiding visitors at the Historical Museum  
 Helping to restore Milton's cemeteries  
 I'm unable to participate, but I support the Society's efforts and programs

- Caring for Historical Museum collections  
 Assisting with genealogical research  
 Community outreach/public relations/fundraising  
 Other \_\_\_\_\_

The Milton Historical Society meets the first Wednesday of each month at the Milton Historical Museum, at 7:30 p.m. Categories of membership are: Individual - \$5.00, Family - \$7.50, Honorary (age 80 and over) - Free  
 Membership dues and form may be mailed to: Milton Historical Society, P.O. Box 2, Milton, VT 05468